

# LIQUID LEVEL GAUGES



## 4400 SERIES LEVEL GAUGE CLOSE-MOUNT LEVEL GAUGE

### APPLICATION:

The KENCO close-mount level gauge is ideally suited for applications in which the level gauge must be mounted with a minimum of protrusion from the tank. Typical applications include offshore or corrosive atmospheres, packaged hydraulic equipment, steel mill pumps, panel boards, surge tanks, radiator fluid levels.

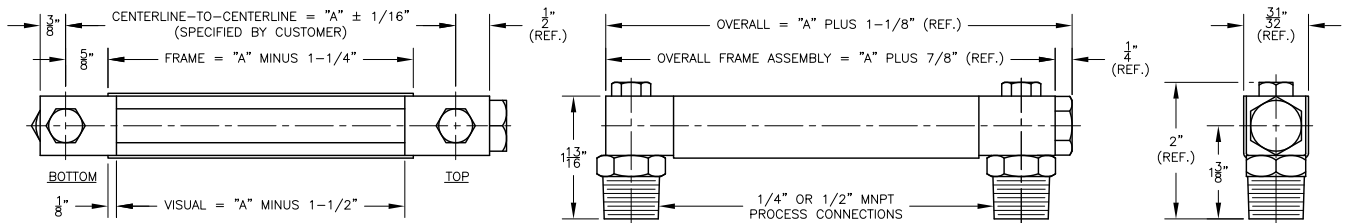
The design of these gauges affords easy installation. Simply install the male thread adapter into the tank connection and then slide the gauge frame over these adapters and bolt gauge into place. The glass is protected from breakage by the gauge housing.

### FEATURES

- Redline glass for easy observation of fluid level
- Metal frame on three sides protects glass
- Easy installation—no pipe unions and/or threaded nipples required
- 1/4" or 1/2" connections mount directly into FNPT process connection



## 4400 SERIES LEVEL GAUGE



## ORDERING SYSTEM

### 4400 Series Level Gauge

REQUESTED BY: \_\_\_\_\_ COMPANY: \_\_\_\_\_

ADDRESS: \_\_\_\_\_ CITY: \_\_\_\_\_ STATE: \_\_\_\_\_ ZIP: \_\_\_\_\_

PHONE: \_\_\_\_\_ FAX: \_\_\_\_\_ EMAIL: \_\_\_\_\_

#### Gauge Style

44M25=1/4" MNPT  
44M50=1/2" MNPT

#### Center-to-Center Dimension (inches)

#### Material of Construction

B=Nickel Plated Brass  
S=316 Stainless Steel

#### Seal Material

V=Fluorocarbon  
A=Aflas  
B=Buna-N  
E=Ethylene Propylene

#### Sight Tube Option

HPRL=1/2" O.D. Redline Glass

#### Maximum Working Pressure (PSIG)

#### Maximum Operating Temperature (°F)

#### Steam

NS=Non-Steam Application

• Example Order Number: 44M50-22-S-B-RL-ATM-150-NS